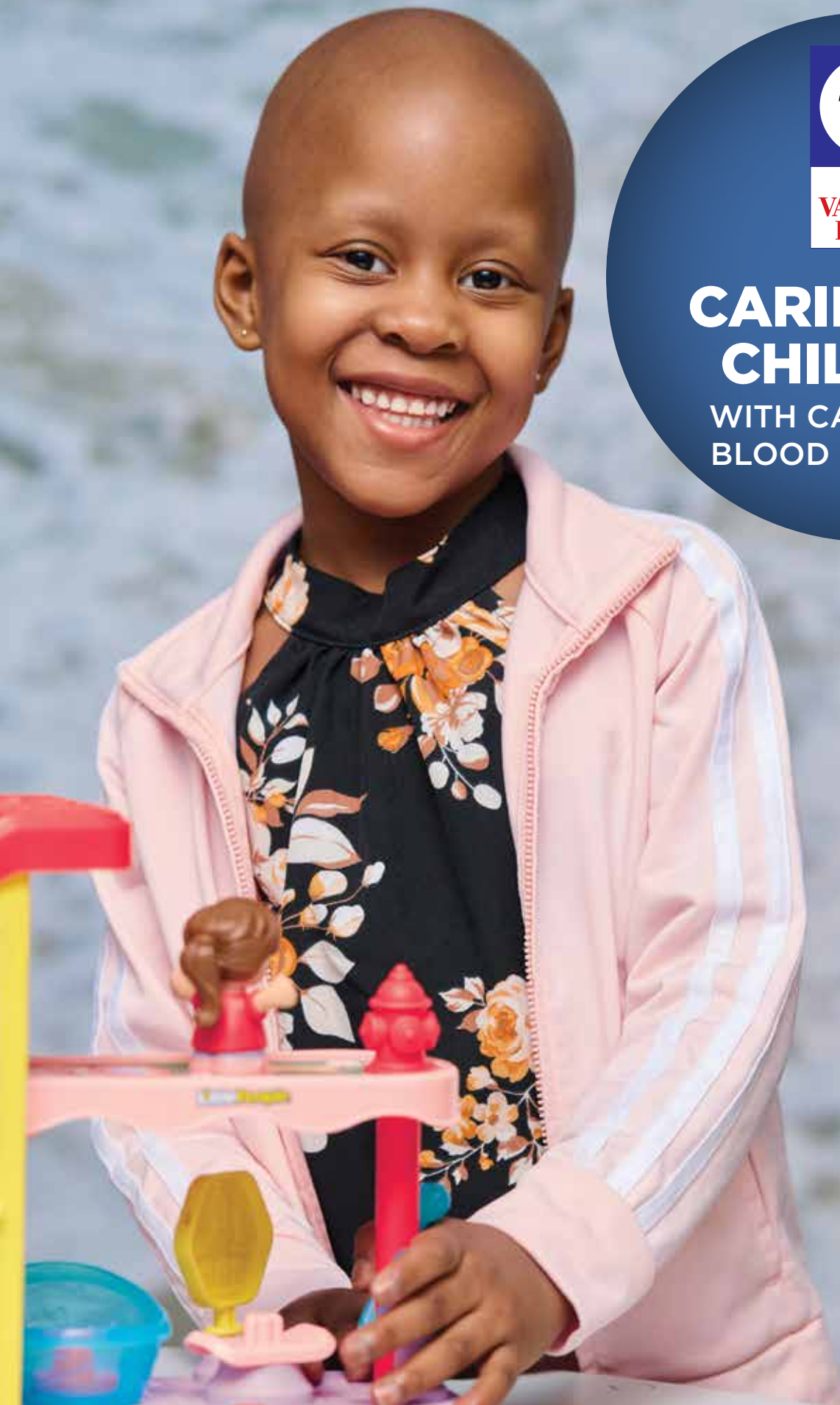




# CARING FOR CHILDREN

WITH CANCER AND BLOOD DISORDERS



## MISSION

THE VALERIE FUND'S MISSION IS TO PROVIDE SUPPORT FOR THE COMPREHENSIVE HEALTH CARE OF CHILDREN WITH CANCER AND BLOOD DISORDERS.



### THE VALERIE FUND LEADERSHIP 2023

#### FOUNDERS

Ed Goldstein  
Suzann Goldstein

#### EXECUTIVE DIRECTOR

Barry Kirschner

#### BOARD OF TRUSTEES

Neil Yaris, *Chair*  
JC Uva, *Vice Chair*  
Brian D. Fuhro, Esq., *Treasurer*  
Merrie Bernstein  
Joseph Cyriac  
Matthew DeNichilo  
Dominic DiBari  
Harriet Greenholtz  
Chris Johnson  
Janet Keating  
Cara Lewis  
Neil Mehta  
David Novak  
Julie Rubinstein

Judy Schumacher  
Ross Silver  
Stephen Squeri  
Sharon Weintraub

#### LEADERSHIP COUNCIL

Howard Brechner, Esq.  
Tara Favros  
Ron Festa, Ph.D.  
Joe Mangione  
Krista McKerracher  
Debbie Schiller  
Joe Uva  
Diane Young, M.D.

#### YOUNG PROFESSIONAL NETWORK

Dominick Kaczor  
Chuck Kohaut  
Manav Sarkaria

#### THE VALERIE FUND STAFF

Lori Abrams  
*Director of Development*  
Leah Del Piano  
*Event and Fundraising Manager*  
Millie Finkel  
*Camp Happy Times Director Emeritus*  
Bunny Flanders  
*Director of Marketing and Communications*  
Aimee Kowalak  
*Database/Office Manager*

#### Jennie Leto

*Assistant Director of Development/Program Officer*  
Jill Rhodes  
*Communications Associate*  
Kelly Rossiter  
*Associate Director of Development*  
Matt Ruttler  
*Camp Happy Times Director*  
Diana Stuckey  
*Community and Special Event Manager*  
Edga Veloz  
*Director of Finance*  
Katelyn Weissman  
*Development Manager*



Dear Friends:

We are pleased to report that 2023 was another record year for The Valerie Fund, our children and their families. In fact, 2023 was our largest fundraising year ever! **For the first time, we raised over \$9 million to support the children and families benefiting from our three core programs: The Valerie Fund Children’s Centers, Camp Happy Times and our Scholarship Fund.**

More importantly than the record-breaking revenue is the fact that our hospital-based centers received \$3.5 million in support to ensure all of the psychosocial programs needed to provide the highest quality of care for over 6,000 children, treated close to home, at our eight centers. That’s a 30% increase in support in just the last two years. Our scholarship program also grew to new heights last year as we awarded over \$540,000 in scholarships to 132 current and former Valerie Fund patients to encourage them to succeed and further their education. Camp Happy Times was again in full swing as children and young adults were treated to another free summer camp experience for the 42nd straight year.



**The bottom line for 2023 was yet another record where a total of \$5.5 million went directly to programs benefiting our children and their families!!**

We continue to grow the pediatric hematology / oncology programs at the centers. We continue to support all the caregivers in the centers by funding all of the tools and programs they ask of us. And our biggest growth can be seen in our direct support to all the families whose lives have been turned upside by cancer or a blood disorder. In 2023, our family emergency support doubled as we made sure that mothers and fathers could focus on their children and help them get better. This same emergency support will probably grow another 100% this year as we expect to provide close to \$500,000 to support these same families with rent, food and financial support.

We cannot thank you all enough for your own financial support that’s allowed our Board to expand our impact to the thousands of children that depend on The Valerie Fund’s Children’s Centers, Camp Happy Times, Scholarship Program and Emergency Fund. It’s that Valerie Fund “special sauce” that makes a huge difference every single day because of YOU!

Enjoy the amazing successes in this 2023 Impact Report.

**We are, and will always be “ALL ABOUT THE KIDS”.**

Sincerely,

Neil Yaris  
Chair

Barry Kirschner  
Executive Director

# A Year of The Valerie Fund at Stony Brook Children's Hospital

One year in, the newest Valerie Fund Center at Stony Brook Children's Hospital has had an incredible impact on the lives of their patients and their families. Support from The Valerie Fund has allowed the Oncology & Hematology department at Stony Brook Children's Hospital to staff a full-time psychosocial support team, including a social worker, child life specialist, psychologist, educational liaison, and survivorship coordinator.

Bringing in these positions has improved and enhanced the psychosocial care for the patients treated at Stony Brook Children's Hospital. The new full-time psychosocial support team has made the workflows easier, which results in better outcomes and greater patient satisfaction. The newest Valerie Fund Children's Center has brought our special brand of support to a new community in Long Island, providing individualized care to children close to home.

The full-time, 100% dedicated support in these essential roles enables the Center to better serve the needs of their patients. Funding a dedicated Child Life Specialist provides essential care

individualized for the needs of the patients and their families. Child life is in constant communication with the care team and works hard to help meet all needs as they arise. The social worker, rather than being called in when issues arise, is part of the care team from the start, regardless of whether the family has any issues. Having this

***"We are really proud to be a Valerie Fund Center. That means a lot to us. We feel very fortunate to be a part of this organization, not just because of the financial piece, but because of the amazing reputation of the other centers. We are all very happy to brag about how we are the eighth Valerie Fund Center."***

*~Laura Hogan, MD  
Chief of Division of Pediatric Hematology and Oncology*





earlier touch point enables proactive support, identifying needs that might not have come to light at all, or so quickly. Knowing this support is there gives a greater sense of comfort and familiarity to all the families.

In normal times, school is challenging for a child in treatment for cancer or a blood disorder and COVID-19 has brought an even higher burden. The Educational Liaison role is shared between two people for full-time support. Their everyday presence in the Children's Center allows them to directly interact with the patients and address issues in real-time. The improved interactions between the Liaison and patients has a huge benefit.

Where The Valerie Fund support is having the greatest impact is the level of support that occurs outside of the Hospital. For a 14-year-old patient, this support was life-changing. Her treatment occurred during COVID and had left her with a sense of isolation and loneliness. She was able to attend The Valerie Fund's Camp Happy Times. Going to camp was the first time since her diagnosis that she could connect with other people who understood what she was going through. One week with other campers just like her made such a beautiful and dramatic difference in her life, giving her a community and life-long friendships.

The support from The Valerie Fund's Emergency Fund program and Scholarship program has also been tremendously helpful for those patients who have found themselves in need. Parents have so much to worry about with the medical and psychosocial needs of their children, that not having to worry about being kicked out of their homes or having their electricity turned off is a huge help, one that the patients and families are very grateful for.

Several Stony Brook patients have benefited from the Scholarship program. The financial burden of cancer or a blood disorder is tremendous. We believe that a kid shouldn't lose their opportunity to attend college just like anyone else. Parents often have to quit work to care for their child during treatment, putting them behind on saving for college. If a patient relapses, the added burden could otherwise put college out of reach.

The success at Stony Brook Children's Hospital demonstrates the value of The Valerie Fund mission. It proves that the most effective way to heal the children in our care is to treat them emotionally, socially and developmentally, as well as medically.



# The Valerie Fund expands care

## EXPANDING HEMATOLOGY CARE AT ATLANTIC HEALTH SYSTEM'S GORYEB CHILDREN'S HOSPITAL

**Dr. Christopher Lawlor** joined The Valerie Fund less than a year ago, but is already making a huge impact on care for our Valerie Fund patients. His goal is to provide world class medical care for the whole child and the whole family from start to finish. We are excited to announce the expansion of hematology support at **The Valerie Fund Children's Center at Atlantic Health System's Goryeb Children's Hospital** with a new full-time hematology social worker and a full-time hematology nurse navigator.

Care for children with blood disorders can be complex. At The Valerie Fund Children's Center in Goryeb Children's Hospital, they care for pediatric patients with chronic and complex blood disorder diagnoses – hemophilia and other bleeding disorders, clotting issues, sickle cell diseases and more.

Having a full-time hematology social worker and hematology nurse navigator will add to the care for the existing Valerie Fund patients. First and foremost, these two new positions will enable the Center to better serve the children with blood disorders currently

***"I am thrilled that we have the support from The Valerie Fund for a hematology social worker and a hematology nurse navigator. They will allow us to further advance the world class care that we are already providing for patients here, as well as increase our ability to reach out to new patients and participate in new innovative care."***

*~Dr. Christopher Lawlor,*

*The Valerie Fund Children's Center at Goryeb Children's Hospital*

being treated at this location. It also enables the Center to engage in community outreach to reach all patients including those in previously underserved areas. Patients and families may not realize the center exists and offers the scope of the psychosocial services that are the hallmark of The Valerie Fund.

The support of a hematology social worker will help patients better manage complex disorders that require chronic care and often medications. Blood disorders such as Sickle Cell Disease and Hemophilia are chronic diagnoses. These patients need lifelong care to help them maintain good health and achieve their goals and potential.



Our new nurse navigator will help facilitate the multiple layers of specialty care that blood disorder patients require from the different specialists, evaluations, and procedures required. This role will facilitate access to transportation to appointments, follow up to make sure patients attend appointments, outreach when they miss appointments, and create educational materials in different languages.

Having these new positions supporting the lifelong diagnosis of a blood disorder will help give the patients the education and tools necessary to help them transition from pediatric to adult care.

The addition of these two new positions continues our efforts to expand the program, enabling us to increase access to new medications, new clinical trials, and innovative therapies and opportunities for our patients.

Dr. Lawlor is passionate about providing the best care possible for his patients. He is exuberant, energetic, and with an exciting vision for the future at The Valerie Fund Children's Center at Goryeb Children's Hospital. With these new positions, Dr. Lawlor is breaking barriers to care and expanding access to treatment and we are excited to support his efforts.



## OUR EDUCATION LIAISON IS NOW FULL TIME AT OUR ST. JOSEPH'S CENTER

Educational Liaison **Diana Gomez, M.Ed** now provides full-time support as part of the care team at **The Valerie Fund Children's Center at St. Joseph's Children's Hospital**. The educational liaison is there to support the patient's educational needs while they undergo treatment.

Being at the center full-time enables Diana to better meet the needs of the patients and families, supporting them in meetings with a child study team at a patient's school, and advocating for accommodations such as an IEP (individualized educational plan). Diana is a certified teacher with 13 years of experience in the NYC school system, enabling her to do more than just facilitate educational support. She may be found tutoring patients while they undergo treatment or providing ESL (English as a second language) support for a patient to help her get a GED and go to college.

Being in the clinic full-time opens up Diana's schedule for more school visits where she may speak to a patient's class about their



diagnosis and educate the class about what a classmate is going through. Her experience in the educational system is an asset when it comes to building relationships with the educational entities and is working on building partnerships with schools across the districts in Paterson and beyond.

Working with an underserved community, Diana's support in and out of The Valerie Fund Center is helping children overcome any challenges in their path – from completing school to preparing for college.

## A LOOK INTO THE NURSE NAVIGATOR ROLE FUNDED BY THE HEALTH CARE FOUNDATION OF NEW JERSEY



**Ashley Mariconda**, MSN, RN, PED-BC, CPNP-PC is the Nurse Navigator for **The Valerie Fund Children's Center at Atlantic Health System's Goryeb Children's Hospital**. Ashley's position was funded in its 2023 inaugural year with a generous grant from the **Healthcare Foundation of New Jersey**. The Healthcare Foundation has supported Valerie Fund programs since 1999, with grants totaling more than \$500,000.



The nurse navigator eases access to care and bridges the gap between the healthcare providers and the patients and their families. As a nurse, Ashley can answer medical questions and serve as a point person for the families in coordinating and scheduling the multiple medical specialist appointments required during treatment while making sure all the authorizations are completed. This vital member of The Valerie Fund Children's Center care team relieves this burden for the parents, enabling them to focus on their child. The nurse navigator supports the child from diagnosis to survivorship, care that never stops. As Ashley said, "This is a vital

role that helps to ensure that all aspects of care run smoothly and in a timely manner from diagnosis into survivorship. Even when treatment ends, we are always there for them."

Ashley shared an example of how vital her role is in the clinical care team. A single mother came in with an infant diagnosed with cancer. The mother was overwhelmed on her own with an infant with cancer. The child had psychosocial needs that required assistance, all on top of the required coordination of his medical treatment. The mother did not have reliable transportation and was missing appointments due to the unreliability of the Medicaid-approved transportation service – appointments that had been set up weeks in advance and coordinated between the specialty departments required her care. The lack of reliable transportation impeded this infant's medical care. Ashley was able to get a grant and set up the Uber healthcare fund providing reliable transportation to treatment.

For sickle cell patients, the nurse navigator focuses largely on follow-up and compliance with care. Based on the effectiveness of having a nurse navigator on the team, The Valerie Fund has approved funding for a second nurse navigator to work solely with hematology patients, while Ashley focuses on oncology patients. In the interim, The Morristown Valerie Fund team has been establishing a standard of care for sickle cell patients to help ensure they understand why attending frequent follow-up appointments, preventative screenings, and taking their medication regularly will help to keep them healthy.

# Three newly created scholarships to provide \$100,000 in financial awards to Valerie Fund patients

In 2023, New Jersey state colleges cost approximately \$35,000 for in-state tuition and board. Many private schools were more than double. The Valerie Fund Scholarship Program was created to acknowledge patients' desires to pursue their dreams and to acknowledge the financial burden many of their families face. For the current academic year, it provided 132 scholarships totaling \$530,000. This includes 27 named scholarships that have created 39 individual awards of \$5,000 to \$25,000.

Beginning with the 2024-25 academic year, Valerie Fund patients past and present in pursuit of higher education will be eligible for three new significant scholarships.



## JOYCE & BELLA SCHOLARSHIP

Julie Rubinstein can't remember a time when The Valerie Fund was not in her life. From her elementary school read-a-thon fundraiser, to the Valerie Fund kids her orthodontist father treated when she was growing

up, to fundraising for The Valerie Fund's Camp Happy Times as a Morgan Stanley analyst, Julie and her husband Andrew maintain a connection that is stronger than ever.

As young parents, the couple volunteered together as Camp Happy Times counselors. Julie would later become a Valerie Fund board member, heading up the organization's strategic planning process at a critical juncture, and their children would find their own volunteer niches in events and fundraising.

In 2023, the Rubinsteins announced the creation of the Joyce & Bella Scholarship to be awarded annually to a Valerie Fund patient pursuing college or graduate school. The name honors the two recipients of a scholarship Julie and Andrew created together with college friends from the University of Pennsylvania. The GNO Scholarship supported patients Bella Rocco, who attended the Rubinstein's alma mater University of Pennsylvania, and Joyce Tumfour, who attended Rutgers New Jersey Medical School. Joyce is now a first-year resident at Mount Sinai West in New York City and Bella is working as an investment banking analyst at Goldman Sachs. The Rubinsteins will provide \$25,000 in annual funding for the next decade.



## HELEN AND BARRY REITER SCHOLARSHIP

In 2015, Helen and Barry Reiter's grandson Aaron, a first-grader, was diagnosed with leukemia. He was treated at Goryeb Children's Hospital's Valerie Fund Children's Center at Morristown Medical

Center, where Dr. Reiter had treated adult oncology patients for decades. Coming from Memorial Sloan Kettering to New Jersey

in 1974, Dr. Reiter set up his practice in Morristown, where he and Helen, a retired nurse and nurse educator, would raise their three children.

In 2023, the Reiters decided to establish a permanent scholarship fund to honor the support Aaron and his family received. They were particularly impressed by the educational technology that allowed Aaron to "attend" school remotely via a VGO robot. Ten years later, Aaron is a healthy 15-year-old high school sophomore in a STEM program who likes robotics. His grandparents will change the lives of Valerie Fund kids pursuing medical or nursing school by offsetting the cost of their education with a \$25,000 annual award.

"We are so grateful for everything The Valerie Fund did for Aaron and our family, so we wanted to help."



## THE BIEBER FAMILY SCHOLARSHIP

Jody and Erwin Bieber have been part of The Valerie Fund since 1995, when their daughter Sarah was diagnosed with Burkitt's Lymphoma and treated at The Valerie Fund Children's Center at Newark Beth Israel Medical Center. As their full-time careers

wind down, Jody and Erwin are spending more time as advocates for The Valerie Fund and have expressed their deep gratitude by establishing the Bieber Family Scholarships to help relieve a tremendous burden for Valerie Fund patients pursuing their dreams through higher education.

Jody and Erwin shared that, "Even though our world was pulled out from under us, we felt supported and well taken care of by Sarah's treatment team. It was a difficult time for all four of us and our extended family in different ways. The treatment team truly cared for our entire family, including Sarah's sister, Amanda. Fast forward to today and we are forever grateful to The Valerie Fund. We take nothing for granted."

Three decades have passed and both Sarah, an eighth grade gifted and talented math teacher, and her sister, Amanda, a human resources and controls specialist, are now married and raising their own children.



# Camp Happy Times, the best week of the year



cancer get to be just like everybody is amazing to see. First-time campers may board the bus as strangers, but they go home as members of the Camp Happy Times family.

Camp Happy Times is a beautiful reunion and established tradition for campers and counselors alike. So many counselors started as campers whose time at camp is measured not in years but decades. Our campers are surrounded by a group of counselors and support staff whose caring and compassion are unparalleled.



It was a magical “Under the Sea” adventure at **Camp Happy Times** this year. Counselors and campers went all out decorating and celebrating the aquatic theme – turning the Tyler Hill campus into a world filled with pirates, mermaids, sharks, and other sea creatures. The joy of being at camp where kids with

Highlights from camp include the classic camp activities of gathering by the bonfire, tubing on the lake, arts and crafts, cooking, swimming, the climbing wall and ropes course, the talent show, hanging out in the canteen, Chanel beauty day, and the annual camp dance. With all the summer rain, the water slide was open and the boys won back the fishing trophy this year.

A round of applause goes out to **camp director Matt Ruttler; Lynn Jones, our staff director; nurse Marty Viegas**, who served as medical coordinator; and **Ellen Ruban, program director**.

## THE EMERGENCY FUND HELPS PATIENT LOOK INTO THE FUTURE

Compassionate care for the whole child is one of the hallmarks of The Valerie Fund. Nothing demonstrates that more than the recent Emergency Fund request that came from **Megan Finney** at **Monmouth Medical Center** on behalf of 24-year-old Valerie Fund patient, **Sabrina**.

Sabrina was born with an extremely rare form of anemia affecting her bone marrow called Diamond Blackfan Anemia (DBA). She was diagnosed at 7 weeks and, as she said, The Valerie Fund has been her world and her family her entire life. Life with DBA has been very challenging for Sabrina. Only in her early 20’s, she has already had both shoulders and a hip replaced from the damage DBA has inflicted on her joints. Now, Sabrina is at a point where the treatments aren’t working and she needs a stem cell transplant.

Fortunate to find a match from an unrelated stem cell donor, Sabrina was devastated to discover that the stem cell transplant therapy would leave her in ovarian failure and infertile. She reached out to a multitude of organizations looking for support. If she had cancer, she would have qualified for fertility support, but with a blood disorder, she was left behind. Sabrina has been putting off treatment, desperate to find help.



***“The Valerie Fund is part of my identity in a way. I’ve spent my whole life [with The Valerie Fund] and I call it my second home. I’m really grateful to you for even giving me the opportunity to be able to bring light to such a dark time of my life. Knowing that I might not be able to have children after my transplant and being able to have the opportunity is really meaningful.”***

Fertility support was a first-time use of Valerie Fund emergency funds. When presented with Sabrina’s application, the Board not only approved the funding but determined this would set a new precedent for future Valerie Fund patients. Sabrina has shown great courage and strength in facing this rare disorder. The Valerie Fund emergency fund restores a measure of “quality of life” for our families. It typically helps with life’s basic necessities, or is used to purchase items that make a huge difference in the lives of our patients and families.

# Jersey Mike's helps Jersey kids



## JERSEY MIKE'S

The Valerie Fund was honored to be chosen as the charity partner for **Jersey Mike's 13th Annual Month of Giving** campaign to support local charities, joining forces with over 120 Jersey Mike's restaurants across New Jersey. During March's Month of Giving, customers were able to donate

directly to The Valerie Fund at any participating Jersey Mike's and on the Day of Giving, these restaurants donated their resources and 100% of the day's sales to The Valerie Fund!

This exciting and impactful partnership resulted in an amazing **\$1.27 million** donated to support The Valerie Fund patients and families. We can't thank Jersey Mike's enough, and of course, all our wonderful supporters who came out on the Day of Giving!

We are excited that Jersey Mike's has chosen The Valerie Fund again to partner with the entire state of New Jersey for the 2024 Month of Giving Campaign—that will take place in over 130 stores!



## THE VALERIE FUND CELEBRATES THE 31ST ANNUAL MORGAN STANLEY REC DAY



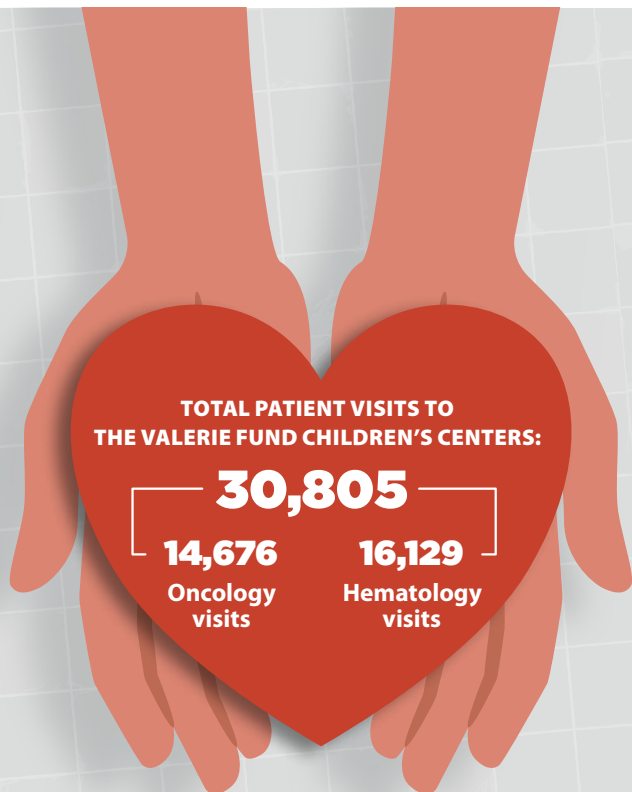
On the Morgan Stanley trading floors and throughout the executive offices, first- and second-year analysts raised support for The Valerie Fund for the 31st consecutive year.

Co-chairs **Matthew Hirschfeld** and **Alexis Kline** led the group in a successful campaign that

raised approximately \$150,000, including participation from the Morgan Stanley Foundation. In addition to funding psychosocial care and Camp Happy Times, the Morgan Stanley campaign covers the cost of the annual "Rec Day," which brought more than 250 Valerie Fund patients and family members to enjoy a day at Turtleback Zoo, West Orange NJ.

The tradition was started by board member Dave Novak and his brother Ken, along with board member Julie Rubinstein in the early days of their successful careers in finance.

# A model of comprehensive healthcare and program breakdown



## 2 YEAR FINANCIAL SUMMARY

| REVENUE                       | 2022               | 2023               |
|-------------------------------|--------------------|--------------------|
| Grants & Donations            | \$5,058,051        | \$3,764,235        |
| Special Events (Net)          | 2,363,410          | 3,836,181          |
| Investment Income             | -\$771,831         | 1,434,041          |
| <b>TOTAL REVENUE</b>          | <b>6,649,630</b>   | <b>\$9,034,457</b> |
| EXPENSES                      |                    |                    |
| <b>Program Services</b>       |                    |                    |
| Hospital Centers              | \$3,070,210        | \$3,488,560        |
| Camps                         | 382,135            | 321,035            |
| Scholarships                  | 482,000            | 548,348            |
| Other Programs                | 510,301            | 1,067,057          |
| <b>Total Program Services</b> | <b>\$4,384,901</b> | <b>\$5,425,000</b> |
| <b>Support Services</b>       |                    |                    |
| Management and General        | \$171,918          | \$376,042          |
| Fundraising                   | 829,817            | 692,402            |
| <b>Total Support Services</b> | <b>1,001,735</b>   | <b>\$1,068,444</b> |
| <b>TOTAL EXPENSES</b>         | <b>5,386,636</b>   | <b>\$6,493,444</b> |
| <b>CHANGE IN NET ASSETS</b>   | <b>\$1,262,994</b> | <b>\$2,541,013</b> |

Unaudited 2023 Results



# People and events that support our work

## A TASTE OF GIVING



The 12th Annual **Taste of Giving** was held March 2, 2023 at New York's Mandarin Oriental. Guests got a deeper understanding of The Valerie Fund and raised an amazing **\$1.8 million dollars** to support our programs. Celebrity auctioneer and stand-up comic, Colin Quinn entertained the crowd. Thank you to co-hosts **Daniel Choquette, Matthew DeNichilo and Rachel Cecil, Brendan and Jenifer Garvey, Brad and Jennifer Henis, Daniel and Mary Hoffman, Jeffrey and Katina Mayer, Randy Reiff, Bob Richter, Lou and Blair Rosenfeld, Jonathan and Debbie Sebiri, Marc and Bridget Toscano, Josh and Sharon Weintraub, Scott and Rachel Yedid, and Ben Zhang.**

## KIDS ICE CANCER



The **Kids Ice Cancer** exhibition game benefiting The Valerie Fund took place on June 2, 2023. Partnering with The Valerie Fund, **Andrew Low** continues to organize and lead his Kids Ice Cancer to new heights. Andrew and his teammates raised \$65,000, making it a total of \$323,000 in just four years for our kids!

## THE AMERICAN EXPRESS CHARITY GOLF TOURNAMENT



**The American Express Charity Golf Tournament** is held annually at Baltusrol Golf Club. Chaired by **Steve Squeri** and co-sponsored by **Dell**, this tournament

has been a staple event for The Valerie Fund for 23 years and has raised millions of dollars for the children and families of The Valerie Fund. This year over \$465,000 was raised! Thank you to event sponsors **American Express Global Business Travel, InSerra Shopright, Tom Held, Joel and Ethel Sharenow, Technologent, Turnbridge, GM Advisory, Cast Iron Media, Dentsu, and JDP Mechanical.**



## THE VALERIE FUND WALK/5K

**The Valerie Fund Walk & 5K** presented by **Ed & Sue Goldstein** and **JAG Physical Therapy** returned to the spring, as we came together with our Valerie Fund Community on June 10th. This is one of our favorite days of the year, as we see our patients and their families come together with their supporters to celebrate and honor their strength and courage.

Over two thousand people came to Verona Park for the Walk & 5K. Everywhere we turned, we were met with smiling faces, happy families and kids running and playing. The efforts of our Walk & Run captains and their teams helped ensure the day's success, along with the support of our generous sponsors, and amazing volunteers



helped us raise over \$925,000 Thank you to event sponsors **RWJ Barnabas Health, Atlantic Health, and Oritani Foundation.**

We welcomed the **3rd Annual Lawyers Run** participants again. This group of socially engaged lawyers has raised over \$80,000 to support The Valerie Fund since 2021!

Our friends at **The Learning Experience** were back this year for a 150-yard Color Run Kid's Sprint, where The Learning Experience's mascot, Bubbles, waited to congratulate them.

The day's impact truly resonated, hearing from Valerie Fund Patient **Ben**, treated at The Valerie Fund Children's Center at Newark Beth Israel Medical Center. Ben battles sickle cell disease and he shared that it was in a Valerie Fund Center, the place where he receives treatment, that he feels the most normal.

Former Valerie Fund patient and community advocate, **Alberto Torres** received an award from the Ed & Sue Goldstein Foundation, recognizing his support of The Valerie Fund through Alberto's Angels.

The 2024 Walk & 5K Run will be held on June 8, 2024. It's never too early to form a team and start fundraising!

## CAREOKE FOR THE KIDS



The 18th **CAREoke for the Kids** brought together old friends, as well as some first timers all having fun at this extraordinary event held October 5th. This unique event brings together media industry executives to have a great time and raised over \$320,000 to support The Valerie Fund patients and their families. Thank you to **Adam Mark, Cara Lewis, Dave Tennenbaum, Eric Hawes, Jonathon Ciancetta, Lee O'Connor, Mike Graf, and Pat Brennan.**

## YOUNG PROFESSIONAL NETWORK GALA



The Valerie Fund's Junior Board, relaunched as the Young Professional Network, held their annual gala October 14, 2023. Almost 200 people gathered together in Greenwich Village's Atrium at Ideal Glass Studios to network and raise over \$50,000 to support the patients and families of The Valerie Fund. Valerie Fund kid and former scholarship recipient **Isabella Rocco** energized the crowd, sharing her Valerie Fund journey. Congratulations to Young Professionals Network (YPN) Chairs **Dominick Kaczor, Chuck Kohaut, Manav Sarkaria**, and the rest of the board for pulling off a fabulous event.



## THANKSGIVING BALL GALA

The 32nd annual **Thanksgiving Ball Gala** was held November 17th at The Grove in Cedar Grove, NJ. This event introduces our Valerie Fund Ambassadors and showcases the talent and inspiration of our amazing Valerie Fund kids. **River** performed a beautiful musical number and **Carter** shared his Valerie Fund Journey.

The Valerie Fund was proud to honor **John & Dawn Gallucci** (JAG Physical Therapy) and **John Elliott** (CBS2 Meteorologist) for their years of support for the Annual Walk & 5K Run. JAG Physical Therapy has been a presenting sponsor of the Walk & 5K for over 15 years, while **John Elliott** has partnered with us, broadcasting our mission from Verona Park every year. We are grateful for their support and proud to call them Valerie Fund partners.

# Our corporate and foundation partnerships make us stronger





# 2023 Honor Roll

## VALERIE'S LEGACY

**Members of Valerie's Legacy are donors who have named The Valerie Fund in their estate plan or have made a gift to The Valerie Fund endowment. We recognize these donors in perpetuity for ensuring that the children we serve now and in the future receive the care and support that they deserve.**

- Judy Abrams
- Marilyn Adler/Martin H. Adler Children's Fund
- Paul Bagoon and Family
- Merrie and Eric Bernstein
- David and Gail Cohen
- E. F. Harris Family Foundation
- George and Fran Fousianes
- Michael and Debra Gelband
- Ed and Suzann Goldstein
- Estate of Helen Grace
- The Kapnick Foundation
- Janet Keating
- Lisa's Heart Kids Cancer Research, Inc.
- The Markovitz Family
- Krista McKerracher and Michael McCabe
- David and Jane Novak
- Lauryl Pepe
- Bill and Heather Raincsuk
- The Raine Group
- Glenn and Stacy Schiffman
- Joel and Ethel Sharenow
- Jon and Abby Winkelried

## VALERIE'S CIRCLE (\$100,000+)

- American Express
- Estate of Judy Abrams
- Brendan and Jenifer Garvey
- Ed and Suzann Goldstein
- Jersey Mike's Franchise Systems, Inc.
- Jane and David Novak
- Barry and Helen Reiter
- Andrew and Julie Rubinstein
- Debbie and Howard Schiller
- Barbara Schoenberg
- Steven and Beverly Rubenstein Charitable Foundation, Inc.
- Josh and Sharon Weintraub

## LEADER (\$50,000+)

- Erwin and Jody Bieber
- Daniel Choquette
- Dell Technologies
- Delta Air
- Healthcare Foundation of New Jersey, Inc.
- Brad and Jennifer Henis
- JAG Physical Therapy, LLC
- Neil Mehta and Paula Cheng-Mehta
- Joel and Ethel Sharenow
- The Samuel Freeman Charitable Trust
- Singh Family Foundation
- Tina and Stephen Squeri
- Chetan and Shivani Vohra
- Scott and Rachel Yedid
- Diane Young and Philip P. Crowley
- Xingbin Zhang

## PHILANTHROPIST (\$25,000+)

- American Express Global Travel
- Atlantic Health System
- Keith and Debra Banks
- Edward Bastian



- Merrie and Eric Bernstein
- Sanford Bier
- Bread Financial
- DiFeo Auto Group
- Chaojun Fan and Kaiyan Lin
- Richard and Maureen Finkel
- Fred and Marie Weiss Foundation
- John and Dawn Gallucci
- The Gelband Family Foundation
- Hope & Heroes Children's Cancer Fund
- Inserra Supermarkets, Inc.
- Jamieson and Hayley Johnson
- The KRE Group
- Lowenstein Sandler LLP
- Jeffrey and Katina Mayer
- Morgan Stanley Fixed Income & Commodities
- Mulvaney Family Foundation
- Oritani Charitable Foundation
- Rackson Restaurants, LLC

- Robert Richter
- RWJ Barnabas Health
- Liam and Joy Sargent
- Schumacher Chevrolet
- Jonathan and Debbie Sebiri
- Toscano Family Charitable Fund
- Michael and Kirsten Weinstein

## BENEFACTOR (\$10,000+)

- Amazon
- AMC Networks
- A Mother's Kiss
- William and Kimberly Anast
- Anonymous
- ASM Mechanical Systems
- Bank of America
- Joseph and Robyn Bier
- Big G Charitable Foundation Corp
- BJ's Wholesale Club

Jillian and Ryan Bowes  
 BTIG  
 Burger Brothers Restaurant Group Inc.  
 Cadent TV  
 Carrols LLC  
 Cast Iron Media  
 CBS Interactive  
 CBOE Global Markets  
 CHANEL  
 The Children's Hospital of Philadelphia  
 Citi  
 Citizens Energy Corp.  
 Clifford Chance US LLP  
 CPV Shore, LLC  
 Creative Foods Corp.  
 Cushman & Wakefield  
 Dechert LLP  
 Matthew DeNichilo and Rachel Cecil  
 Dentsu Creative Advertising LLC  
 Devs Foods  
 Paul and Valerie Dottle  
 Dunkin' Joy In Childhood Foundation, Inc.  
 Mark Eichorn  
 Energy Capital Partners | ECP  
 Robert and Norma Falcone Fanatics Foundation  
 Joseph and Lori Feldman  
 Celia Felsher and John Cecil  
 FirstKey Homes, LLC  
 Patrick Fleming  
 FOX  
 Alan and Christine Gallo  
 Cheryl and Patrick Glory  
 GM Advisory Group  
 Eli Gross  
 Thomas and Linda Held  
 Holman Automotive Group Inc.  
 Susan Huang  
 iSpot TV  
 Matt James and Vivian Lee  
 JDP Mechanical Inc.

The Jerry Cohen Foundation  
 Bill and Mary Johnston  
 JP Morgan Securities  
 Judith Kaplan and Steven Miller  
 Kearny Bank Foundation  
 Colleen and Tom Keating  
 Janet Keating  
 Barry Kirschner and Beth Tepper  
 Kissler & Co., Inc.  
 William Kloos and Katelyn Hirsch  
 KPMG LLP  
 Kroll, LLC  
 Kyndryl/IBM  
 Lester Glenn Subaru  
 Bill McDermott  
 Krista McKerracher and Michael McCabe  
 The McKinley Place Family Foundation  
 McKinsey & Company, Inc.  
 Anthony and Andrea Melchiorre

Merck & Co.  
 Merck Company Foundation  
 Mitzi and Warren Eisenberg Family Foundation  
 Monmouth Medical Center  
 Morgan, Lewis & Bockius LLP  
 Morgan Stanley Foundation  
 NBCUniversal  
 Newark Beth Israel Medical Center  
 The Nicholas Wihlborg Foundation  
 Nomura Securities International  
 North South Charity  
 Girls Basketball  
 O'Friel Family Foundation  
 Larry and Diane O'Friel  
 Online Computers and Communications LLC  
 Parade Enterprises, LLC  
 Paramount

Parkview Plumbing & Heating Inc.  
 Paul Miller Management Inc.  
 Platkin Family Foundation  
 PriceWaterhouseCoopers, LLP  
 Jeffrey Pritchett and Kerry Held  
 Quick Quality Restaurants, LLC  
 Route 46 Chrysler Jeep Dodge Ram  
 Peter Salwin  
 Schaps Family Foundation  
 Henry and Jacqueline Schram  
 Schulte Roth & Zabel LLP  
 Servier Pharmaceuticals, LLC  
 Marjorie and Jonathan Slass  
 St. Joseph's Hospital & Medical Center Foundation Inc.  
 Joseph and Laurie Steffa  
 The Sumas Family Foundation, Inc.  
 Summit Luminary Fund  
 Technogent  
 theTradeDesk  
 Judy Schumacher and Stephen Tilton  
 Turnbridge Equity  
 U.S. Bank  
 Vevo  
 W.B. Mason  
 Weather Group  
 Wells Fargo Securities  
 West Deptford Energy Holdings, LLC  
 Richard Wood  
 Yonggang Xue and Liye Zhang  
 Neil and Jane Yaris  
 Zenon, LLC



**PARTNER  
 (\$5,000+)**

2000 Auto Sales, Inc.  
 Faris Abinader  
 Marilyn Adler  
 Aetna  
 The Alfiero and Lucia Palestroni Foundation, Inc.





Alphonso Inc.  
 Anonymous  
 Deborah Appel  
 Lucy and Larry Bagoon  
 Paul and Frances Bagoon  
 Derek and Jennifer Baumgarten  
 Bell Audi  
 Russell and Pia Binns  
 Blue Knights NJ Chapter III  
 George and Meg Bradt  
 Bristol Myers Squibb  
 Michael Brown  
 Brownstone Investment  
 Group, LLC  
 Christopher Burnett  
 Thomas and Lynne Caffrey  
 Anthony Calandra  
 Care Camps

Kevin Carney  
 Ian Carow  
 Ronald and Annette Carr  
 Cedar Grove High School  
 Chatham Asset Management  
 Peter and Peggy Cherasia  
 Arnold Civins  
 Clayton Dubillier Rice Foundation  
 Coca-Cola North America  
 Stephen Colbert and Evelyn  
 McGee-Colbert  
 Coughlin Midlige & Garland LLP  
 Joseph and Suni Cyriac  
 Mike Daniel  
 The Daniel Galorenzo  
 Foundation, Inc.  
 Dean Michael Clarizio Cancer  
 Foundation  
 Diaco Family Foundation

DIRECTV  
 DISH Media TV  
 Disney  
 ECD NY Inc.  
 Alejandro Feely and Vanesa  
 Jurisevich  
 Jeff Festa and Daniel Seaman  
 George and Frances Foussianes  
 Freewheel, A Comcast Company  
 Future Today Inc.  
 Mario Gallucci  
 Antony Girona  
 Glassview  
 Mark and Lauren Gleason  
 Lynda Goldschein  
 Google  
 Highbury Concrete, Inc.  
 Hi I'm Dave LLC  
 homegenius a Radian Company  
 Innovid  
 Jaeger Lumber  
 JBS Custom Software Solutions  
 Jennifer Swift Fieldman  
 Foundation Fund  
 Johnson & Johnson Matching  
 Gifts Program  
 Joy Street Foundation  
 Charles Kohaut  
 Kronthal Family Foundation, Inc.  
 Michael Kumar  
 The Learning Experience  
 Linklaters LLP  
 Joseph and Linda Lombardi  
 Rhoda Manheim  
 Thomas Marano and Erin DiBlasio  
 The Marcus Family Foundation  
 Lauren Marra  
 Daniel and Barbara Masiello  
 Ralph Mazzeo and Rosemarie  
 Monzo  
 David and Stephanie Muldberg  
 Mutual of America Financial  
 Group  
 Jean-Pierre and Nanci Naegeli  
 Netflix  
 Genghis Niver

Nicolle Pangis  
 Pfizer  
 Pioneer Window Mfg. Corp.  
 The PNC Financial Services Group  
 PNC Foundation  
 PubMatic  
 Sam Rice  
 Roku  
 Louis and Blair Rosenfeld  
 Round Hill Risk Management  
 Michael Rowe  
 Russo Family Foundation, Inc.  
 Gary Rygh  
 Saker ShopRites, Inc.  
 Samsung  
 Carl Scalzo  
 Helen Shan  
 The Silver Family Foundation  
 Ross and Linda Silver  
 Laura Stemmler  
 William Teuber  
 Thomas and Judith Cash  
 Foundation  
 Toyota of Morristown  
 Kevin and Sue Trent  
 Tri-County Orthopedics  
 Valley National Bank  
 VideoAmp  
 Martin and Louise Viegas  
 Vizio, Inc.  
 Wakefern Food Corporation  
 Warner Bros. Discovery  
 The Washington Post  
 WebPT  
 Alfred Wolin  
 Stephen Yarad  
 Kathryn and Jeffrey Zukerman

**FRIEND  
 (\$2,500+)**

3301 Fort Hamilton  
 Operating Corp.  
 41725 Fulton Operating Corp.  
 Lori Abrams  
 David and Danielle Abrutyn

Maurice and Laurie Aburdene  
 Ampersand  
 Apollo Distributing Company  
 ARCO DB Companies  
 Arsenal Capital Partners  
 Mohit Assomull  
 BET Media Group  
 Candy Blau and Michael Graime  
 Blockgraph  
 Howard and Jill Brechner  
 Breeze National Inc.  
 Brogan Cadillac  
 Burger Barn  
 Nell Butler  
 Calandra's Enterprises  
 Covius Services, LLC  
 Cox Auto  
 CVS Health Foundation  
 Mitchell Decter  
 Toni and Peter DeMaria  
 EisnerAmper  
 Anthony and Susan Farrugia  
 Ronald and Felicia Festa  
 Mark and Wendy Friedmann  
 The Gallucci Law Firm  
 Rhonda Graber  
 Scott Greenberg  
 Jillian Griffiths  
 Guggenheim Partners  
 HDR Foundation  
 Brian Healy  
 Daniel and Christina Hoehn  
 Steven and Lauren Hollender  
 Horizon Blue Cross  
 Lindsay Huddle  
 In The Park Savoy Caterers  
 JMG Public Relations  
 Justin Gimelstob Children's Fund  
 Kent, Beatty & Gordon, LLP  
 Keurig Dr Pepper  
 William Krovatin and  
 Patricia Schiripo  
 James and Linda Leth  
 Doug Macron and



Francine Giocondo  
 Louis and Sylvie Magnan  
 Major League Soccer  
 Manasquan Bank  
 Charitable Foundation  
 Joseph and MaryAnn Mangione  
 Michael and Jennifer Markovitz  
 Joseph Maurillo  
 Thomas Miles  
 Karen Morris  
 Ali and David Nathan  
 New Jersey Manufacturers  
 Insurance Group (NJM)  
 New Providence Dentistry  
 Barry and Pamela Ostrager  
 Pandora  
 Lisa and Thomas Picillo  
 Lawrence Pincus  
 William and Heather Raincsuk  
 RD Parisi Associates  
 RDQ Economics

Nicholas and Liz Rifino  
 Jeffrey and Randi Rosen  
 Muge Royce  
 RTI Restoration Technologies Inc  
 Screenvision Media  
 The Scripps Networks  
 Seton Hall University  
 The SGMG Foundation  
 Michael and Kerin Sidlowski  
 Robert and Rhonda Silver  
 Snap Inc.  
 Frank and Julianne Sowinski  
 Joseph and Linda Spencer  
 Spotter  
 Stat Biomedical Technicians Inc.  
 Strategic Wealth Advisory Group  
 Kelly and Ray Studinarz  
 Amir Syed  
 Daniel Tegen  
 Daniel and Tresa Toscano  
 Triton Construction

TV One  
 Valley National Bank  
 Jimmy Vasilopoulos  
 Joyce and Michael Wallstein  
 Wawa Inc.  
 Jacob Weiss  
 Westfield Service League  
 Jacky Wong  
 Peter Wunsch  
 WWT LLC  
 Linda Yaccarino Madrazo  
 John and Leila Zengel

#### ADVOCATE (\$1,000+)

Steven Abrahams  
 Brad and Brooke Abrams  
 James Ahern  
 AIG Matching Gifts  
 Rakan and Susan Aledwan  
 Alfred's Sports Shop  
 American Laundromat Records  
 Ronald and Jacqueline Angel  
 Anonymous  
 APALA-NJ  
 Apollo Global Management Inc.  
 James Appleton and  
 Marjorie E. Egarian  
 Associated Technology Inc.  
 Steve Bader  
 Michelle Ballan  
 Caridad and Jorge Barraque  
 Bear Glass  
 Becton Dickinson & Co  
 Ann and Joseph Berkery  
 Ira and Joan Berkowitz  
 Drew Berman  
 Frank Bianco  
 Bruce and Ruth Bier  
 Birkhold and Maider LLC  
 Eric Bischof  
 Robert and Rory Blair  
 BNE Real Estate Group  
 Richard Bodian  
 Raymond and



Kathleen Borkowski  
 Andrew Boryschuk  
 Brach Eichler LLC  
 Breitman Family Foundation Inc.  
 Michael Breslin  
 Bright Remodeling  
 and Construction  
 Bristol Myers Squibb Company  
 Bristol-Myers Squibb Foundation  
 Burns White LLC  
 Caldwell University  
 Robert Calhoun  
 Michael and Maria Carroccia  
 Kathy Carter  
 Elissa Caterfino Mandel and  
 Hal Mandel  
 Bryan Chao  
 Sharad and Parul Chhetri  
 David Chien  
 Children's Oncology Camping  
 Association (COCA)  
 Circle Construction Group  
 Michael Clancy  
 Samantha Clarke  
 Randi and Howard Cohen  
 Cohn Reznick Foundation, Inc.  
 John and Sarah Collins  
 Colonial Airstream  
 Columbia Bank Foundation  
 Computershare Loan Services  
 John and Mary Conlin  
 John and Christina Cooke  
 Crown Media Holdings, Inc.  
 Frank Cundiff  
 Diana Dacunha  
 Darling Ingredients, Inc.  
 Raul Delgadillo  
 Michael Delvlahos  
 DGR Legal, Inc.  
 Dominic and Karen DiBari  
 Richard Dinar  
 Richard and Judy Dolinko  
 Charles and Joan Doomany  
 Dorfman Abrams Music, LLC  
 Gerard and Caitlin Drumm

Dun & Bradstreet, Inc  
 Donald Dvorin and  
 Dorothy Goldberg  
 Ecolab, Inc.  
 Emmaus Medical  
 The Eric C. Blohm Foundation  
 John and Danielle Esposito  
 Essex County Employees  
 Estates By Vallario, LLC  
 Joseph and Judy Falk  
 Justin and Jaclyn Festa  
 George Filopoulos  
 Robert and Brenda Fischbein  
 Flower Hill Auto Body  
 Sigrid and William Franzblau  
 Sara Frasher  
 Charles and Naomi Fruchter  
 Brian and Cynthia Fuhro  
 FUSE/NuvoTV  
 Dana Gabay  
 Gerald and Carol Galgano  
 Greg Gallagher  
 Patrick Gallagher

Lauren Garcia Belmonte  
 Arthur and Toby Geller  
 Ethan Goldwasser  
 Jason Grebin  
 Robert Guelich and  
 Katherine Kearney  
 Guidepoint  
 Kenneth and Elizabeth Hackman  
 Hallmark Channel  
 Harrison Cancer League  
 Luanne and William Harth  
 Hartnett Family Foundation, Inc.  
 Christine and Marc Hellman  
 Jay Hidalgo  
 Michael and Betsy Hitzmann  
 Laura and Michael Hogan  
 Holmdel Fire Company No. 1  
 Mary Helen and  
 Jeffrey Holzschuh  
 Craig and Andrea Horowitz  
 Faizan Ibrahim  
 Anthony and Donna Iorio  
 David Israel

Simone James  
 Javerbaum, Wurgaft, Hicks, Kahn,  
 Wilkerson & Sinins  
 Kenneth Jensen  
 Alan and Jill Johnson  
 Jeffrey Johnson  
 Lynn Jones  
 Michael Just  
 Juzefyk Bros. Construction  
 Dean and Emily Kameros  
 Corinne Kampf  
 Gail and Michael Kanef  
 Eric Kanter  
 Jason and Tara Kaplan  
 Michael Kaplan  
 Leonard Karp  
 Katz Digital Video  
 Stephen and Elaine Katzman  
 Patricia Kaufhold  
 Sumanpreet Kaur  
 Aristodimos and  
 Giovanna Kavour  
 Kay Burger Management, LLC  
 Daniel Keating  
 Christopher Kim  
 Barry and Stephanie Kissler  
 Brett Klein  
 Drew Krichman  
 Joel and Rhea Kriegsfeld  
 Norman and Rhoda Krueger  
 L3 Harris Corporation  
 Peter Labbat  
 James and Nancy Laird  
 Lawrence Family Giving Fund  
 David Lawrence  
 Ira and Ilene Lehman  
 LEK Consulting  
 Karen Leshner  
 Susan Levin  
 Cara and Jacob Lewis  
 Paul Lewis  
 Russell Lindberg  
 Local Smoke BBQ  
 Jodi Lokoff  
 Matt Lovecchio



Evan Lubeck  
 John Lucich  
 Scott and Robyn Mack  
 Madison Insurance Group  
 Magnite  
 Magyar Bank  
 Manasquan Basketball  
 Mandelbaum Barrett PC  
 James Mann  
 Peter Manos  
 The Mark Law Firm, LLC  
 Rob Maroney  
 Michael Marra  
 Nicholas Matuschak  
 Matthew Maulbeck and  
 Gina Ardito  
 Sam Maurer-Hollaender  
 David and Marjory McKee  
 McMullen Family Foundation  
 Danielle Menture  
 Mina Mitby  
 Monsignor Farrell High School  
 Karen and Ronald Morris  
 James and Lauren Mozer  
 Peter Naismith  
 Nappa, Monterosso and  
 Poznansky, Attorneys at Law  
 New Jersey Devils  
 Nip-N-Tuck Bar & Grill  
 The Niva & Heeten  
 Doshi Foundation  
 North Central Jersey  
 Association of Realtors  
 NorthEnd Builders LLC  
 Peter O'Connell  
 Dennis O'Keefe  
 Erika Onyeberechi  
 Alex Pakla  
 Andrew and Bridget Paterno  
 Richard and Natalie Peck  
 Penn Mutual Matching Funds  
 Giovanni and Alicia Perone  
 Pestone Family Foundation  
 Shellie Peters  
 Pfizer Foundation Matching Gifts

PIP Printing  
 Players Development Academy  
 Anne Pohner  
 Polevoy Family Foundation  
 Robert and Jane Poznak  
 David and Jen Prael  
 Premier Energy Group, LLC  
 Professional Graphics, Inc.  
 Provident Bank  
 Rael Automatic Sprinkler Co., Inc.  
 Najma Rana  
 Harini and Anand Rao  
 Susan and Lawrence Rascio  
 Allison and Joseph Reynolds  
 Rhino Landscaping, LLC  
 Scott and Erica Ricciardelli  
 Glenn Riedman  
 Mahmud Riffat and Irim Salik  
 Raymond Rivera  
 Allison Robbins  
 The Robert and Marilyn Friedson  
 Foundation

Fred and Helen Roberts  
 Melissa Roosevelt  
 Kristen Rossi  
 Nancy and Steven Roth  
 S&E Bridge & Scaffold  
 Cole Schietinger and  
 Meaghan Henderson  
 Schindler Elevator Corp  
 Joseph Schneider and  
 Jane Zevon  
 Beth Schumacher  
 Vincent and Sheri Scordley  
 Seagen, Inc.  
 Selma and Raymond Kramer  
 Foundation, Inc.  
 Seton Hall University School of  
 Health and Medical Sciences  
 The Shainberg Family Fund  
 Floyd and Iris Shapiro  
 Mary and Adam Shepard  
 Short Hills Surgery Center  
 Single Throw Marketing

Keith Slobodien  
 SL Specialties  
 Nicolette Slusser  
 Smolin, Lupin & Co, PA  
 Kevin Sorgi  
 Robert and Krystyna Steiger  
 Ronnie and Morris Stern  
 James Stoddard  
 Daniel Sullivan  
 Sunset Printing and Engraving  
 Susquehanna International  
 Group  
 Matt and Sara Sykes  
 Darrell and Renn Terry  
 William Thompson  
 Toyota Easy Match  
 Charlie Tripp  
 Joseph Tuazon  
 Yvette Turner  
 Tyler Hill Camp  
 U.S. Trust, Bank of America,  
 Private Wealth Mgmt  
 Union Tool & Mold Co.  
 Joseph Valenti  
 Hugo Vilca  
 Patricia Von Seckendorff  
 W.J. Casey Trucking & Rigging  
 Co. Inc.  
 Christine Waldron  
 Christopher Walsh  
 Matthew and Rebecca Weinstein  
 Seth Weintrob  
 Mark Wenger  
 Whole Foods Market  
 WilkinGuttenplan  
 William H. Connolly & Co.  
 Gail and Ralph Willner-Giwerc  
 Todd Wilson  
 Robert and Suzanne Woertz  
 Woodbridge Community Charity  
 Fund Inc.  
 World Insurance Associates, LLC  
 Robert and Allison Wright  
 John Young  
 Peter Zaki





Zefr  
 Zito Partners, IPZ, and  
 Cento Amici  
 Scott and Beth Zucker

**GIFTS MADE IN HONOR  
 OR MEMORY OF**

Scarlett and Serafina Amaisse  
 Susan Ansari  
 Anthony, Joyce, Gail and  
 Anne Arrighi  
 Esther Berardi  
 Eleanor Bloom  
 Tonianne Bongiovanni  
 Marcella Borgenicht  
 Edward Brody  
 Andrew Buckner  
 Parker Buehler  
 José Borges and Robert Canale  
 Robert Candalino  
 Joyce and Michael Candido  
 Alicia Cherniak  
 Aanya Chhetri  
 Zippy Cimino  
 Kevin Michael Clabby  
 Kevin Clark  
 Will Cody  
 Ryan Conte  
 Justin Corino  
 Anthony P. Costantino  
 Charlotte Craven  
 Dance Works  
 DeLong Grandchildren  
 Melissa Diaz  
 Nate Dibari  
 Pasquale Dibari  
 Toni DiTonno  
 Erin Donnelly  
 Lawrence Duffy  
 Barry J. Dugan  
 John Elliott  
 Millie Finkel  
 Peter Fried  
 Theresa Gadsby



Amelia Chantel Gaillard  
 Una Patricia Galligan  
 George Gallini, Sr.  
 John and Dawn Gallucci  
 Gelband Family  
 Ella Gelband  
 Stefania Gencarelli  
 John George  
 Elizabeth Gerba  
 Florence Gogerty  
 Ed and Suzann Goldstein  
 Molly Greenwald  
 Haas Construction Management  
 Cheryl Lynn Hahn  
 Aidan Harrington  
 Allison Harth  
 Nancy Lee Heffernan  
 Josefina Henriquez  
 Vanessa Hull  
 Edward M. Hyans  
 Suzanne Iacono

Sandra Johnson and  
 Jonathan Williams  
 Alan Kampf and Linda Singer  
 Marybeth Kass  
 Kaufman Family  
 John Edward Kinney V  
 Kendall Kloos  
 Riley Kogen  
 Charles John Kohaut III  
 Susan Koob  
 Sydney Krueger and Sam Cabot  
 Allison M. Lacey  
 Anderson Larrea  
 Natalie A. Lentini  
 Anthony Lieber  
 Ellen Lieber  
 Almeida Loftin  
 Lukasavage Family  
 Lucy Mae Macaluso  
 Stewart Manheim  
 Wyatt Martin  
 Mike and Amy Maselli

Melina N. Mazzie  
 Donna McBride  
 John McCormac  
 Connor McDermid  
 Katie Mulcahy  
 Eric Muldberg  
 Charles Newman  
 Juliet Nigara and Alva O. Way  
 Brian Vincent O'Day  
 Margaret M. Petrocelli  
 Jordan Plauschinat  
 Martin and Amy Pollack  
 Zachary Porras  
 Theodore and Joan Prince  
 Anasuya Rao  
 Zain Rashid  
 Rita Reich  
 Elizabeth Reilly  
 Reiman Family  
 Kathryn Richter  
 William Rigney  
 Rochelle Rubin  
 Julie Rubinstein  
 Jack Sadlock  
 Michael Savare  
 Ayser Saziman  
 Jeffrey Schneider  
 Dean Schoch  
 Kathryn O. Schulien  
 Katie Schulien  
 Jonathan E. Seel  
 Greg Sherry  
 Irene Sidlowski  
 Linda Singer  
 Camilla Sivertsson  
 Hedda Sivertsson  
 Andrew Spelman  
 Daniel Spelman and  
 James Zimmerman  
 David Spelman and  
 Carolyn Rauch  
 Will Spelman and Judy Jansen  
 Joann C. Spera  
 Gerald Tobia  
 Marc J. Toscano



Michael Turk  
Sue and Mike Turk  
Fritzi Umrath  
Malieka Ward  
Danielle Weber  
Cameron Weiss  
Amy Wood  
Neil and Jane Yaris  
Scott A. Yedid  
Diane C. Young  
Elisheva Yuan

Huffman Koos/Anthony Mehran  
JAG Physical Therapy  
Jersey Mike's Subs  
JM Boonton LLC  
Maxwell Joyce  
Stephen and Elaine Katzman  
Peter and Jennifer Kelly  
Patricia Keschl  
King's Road School  
Lafayette 148 Boutique  
Lashology  
Gretchen Lerach  
Local Smoke BBQ  
Lowenstein Sandler LLP

Mama Jojo Crayons  
Master Yoo's Summit Martial Arts  
MaxMara  
David and Marjory McKee  
Metropolitan Seafood Gourmet  
Michael Kors  
Mighty Millie Foundation  
Morris Animal Inn  
Jane and David Novak  
Stacy Oberfeld  
Orange Avenue School  
Papermill Playhouse  
Paramount  
Joann and Scott Parris

Polar Bear Grand Tour  
Portable Playhouse/  
MaryAnn Corey  
Prada USA Corp.  
Rahway Health Services  
Merck & Co. Inc.  
Restaurant Serenade  
Salem Drive Elementary School  
Salvatore Ferragamo  
ShopRite of Lincoln Park, Inc.  
Shop Rite Village Supermarkets  
SoJo Spa Club  
Jack and Matthew Spagnoletti  
Stacey Springer  
Stephen and Tina Squeri  
Michael Stemmler  
Jamie Sworen  
Taylor Products, Inc.  
Touchstone Crystal by Swarovski  
Tory Burch  
Kim Tosh  
Trattoria Mediterranea  
Wakefern Food Corporation  
Matthew and Rebecca Weinstein  
Weinstein Household  
Williams Sonoma

## GIFTS IN KIND

2M Electrical Contractors LLC  
Patrick and Amira Amaise  
American Express  
BD Entertainment  
BeiGene  
Merrie and Eric Bernstein  
Best Provision Co., Inc.  
Bimbo Bakeries USA, Inc.  
Bloomingdale's  
Broadway.com  
Brooks Brothers  
Burger King Corporation  
Ronald and Annette Carr  
CHANEL  
Alyssa Cicalese  
Costco of Edison  
David Mitchell Fine Event Design  
Dawn's Hallmark  
Dolce Salon & Spa  
Dunkin'  
Eight Hills Caterers  
Eyechic  
Fairfield Public Library  
Leah Fox  
Friends of Johnny Deluisi  
Girl Scouts #96625  
Girl Scout Troop 62038  
Herr Foods, Inc.  
Holt Machinery Company



## MEDIA PARTNERS

AMC  
Audacy  
Comcast  
Direct TV  
Discovery  
FOX  
Interstate Outdoor  
OUTFRONT Media  
Screenvision  
Tubi  
Warner Media  
WCBS Newsradio 880  
WCBS – TV  
Vevo



## PHOTO CREDITS

**Front cover: Smelanda**, age 5  
diagnosis Wilm's tumor

**Page 1: Neil Yaris** and  
**Barry Kischner** with **Jillian**,  
age 19, diagnosis with Hodgkins  
Lymphoma and **Ava**, age 18,  
diagnosis with Osteosarcoma

**Page 2: Carrie DeWan**,  
School Intervention & Re-entry  
with patient with **Avery**, age 5,  
diagnosis AML

**Page 3: Michell Graziano**,  
M. Ed-School Intervention &  
Re-entry, survivorship  
coordinator with **Kaitlyn**,  
age 19, diagnosis Osteosarcoma  
and **Sophia**, age 14, diagnosis  
Langerhans Cell Histiocytosis  
(LCH)

**Page 4: Dr. Lawlor** with **Elli**,  
age 7, diagnosis sickle cell

**Page 5: Diana Gomez**, M. Ed  
educational liaison with **Sofia**,  
age 21, diagnosis ALL; **Ashley  
Mariconda** MSN, RN, PED-BC,  
CPNP-PC, Nurse Navigator

**Page 13: Katrina**, age 19,  
diagnosis ALL with her mom

**Page 14: Anderson**, age 3,  
diagnosis Wilm's tumor with  
**Joulé Shipman**, MSW, LSW -  
Pediatric Hematology/Oncology  
Social Worker

**Page 15:** with **Sofia**, age 21,  
diagnosis ALL with Dr. Norko

**Page 16: Migel**, age 20,  
diagnosis ATM with Jessica

**Page 17: Honesty**, age 3, with  
her mom and **Tara Aspen  
James**, MSW, LSW, ATR-P,  
Pediatric

**Page 18: Johnathan**, age 16,  
diagnosis TCELLALL with  
his mom

**Page 19: Carsyn**, age 10,  
diagnosis sickle cell with  
her mom

**Page 20: Honesty**, age 3,  
diagnosis sickle cell with her  
mom

**page 21: Vadim**, age 8,  
diagnosis ITP with his family

Our Program Locations

## **THE VALERIE FUND CHILDREN'S CENTERS & CAMP**

- Children's Hospital of New Jersey at Newark Beth Israel Medical Center, Newark, NJ
- Children's Hospital of Philadelphia, New Jersey Section of Hematology/Oncology, Specialty Care Center, Voorhees, NJ
- Morristown Medical Center, Goryeb Children's Hospital, Morristown, NJ
- New York-Presbyterian, Morgan Stanley Children's Hospital, Columbia University Medical Center, New York, NY
- Overlook Medical Center, Summit, NJ
- The Unterberg Children's Hospital at Monmouth Medical Center, Long Branch, NJ
- St. Joseph's Children's Hospital, Paterson, NJ
- Stony Brook Children's Hospital, Stony Brook, NY
- Camp Happy Times, Tyler Hill, PA



2101 Millburn Avenue  
Maplewood, NJ 07040  
973-761-0422

[TheValerieFund.org](http://TheValerieFund.org)

